



**POSEIDON**  
 MARINE  
**ROBERT P. SCHONES**  
 541-444-1129 H  
 541-961-3368 C  
 RSCHONES@LIVE.COM  
 P.O. BOX 170  
 SILETZ, OR 97380

PRIVATE - CONFIDENTIAL

\*\*\*\*\*

REPORT OF SURVEY

VESSEL PHOENIX III

HOME PORT WASHOUGAL, WASHINGTON

OFFICIAL NO. 214874

OWNERS [REDACTED]

PHONE [REDACTED]

ADDRESS [REDACTED]

EMAIL

TYPE SINGLE OIL SCREW - WOODEN DISPLACEMENT HULL

WATERS NAVIGATED PACIFIC COASTAL AND INLAND WATERS

YEAR BUILT 1919      BUILT BY MARTONOLICH      WHERE BUILT DOCTON, WA.

**WITH EXCEPTION OF DEFECTS NOTED BELOW I FULLY RECOMMEND THE PHYSICAL HAZARD.**

ESTIMATED NEW REPLACEMENT VALUE \$1,200,000.00

ESTIMATED PRESENT MARKET VALUE \$130,000.00

SURVEYED OUT OF WATER AT [REDACTED]

DATE 3/20/2024

BY REQUEST OF OWNER FOR CONDITION, VALUATION AND INSURANCE PURPOSES

*Robert P. Schones* SURVEYOR  
 ROBERT P. SCHONES

<b><u>HULL LENGTH</u></b> 49.5 REG.	<b><u>BEAM</u></b> 14.0	<b><u>DEPTH</u></b> 6.6	<b><u>DRAFT</u></b> APPROX 6'
<b><u>LAST DRYDOCKED</u></b> 3/2024	<b><u>GROSS TONS</u></b> 33		<b><u>NET TONS</u></b> 22
<b><u>PLANKING</u></b> 1-3/4" LARCH & FIR	<b><u>FRAMES</u></b> 2-1/4"X3" OAK & PURPLEHEART		<b><u>SPACED</u></b> 12" OC
<b><u>MAIN DECK</u></b> 1-5/8" FIR	<b><u>BEAMS</u></b> 5" X 6" FIR		<b><u>SPACED</u></b> 18" OC
<b><u>LONGITUDINALS</u></b> N/A	<b><u>BULKHEADS</u></b> 5-TOTAL		
<b><u>FINISH</u></b> MARINE GRADE PAINT	<b><u>HOW VENTILATED</u></b> NATURAL		

**VESSEL DESCRIPTION, LAYOUT AND CABINS**

- THE "PHOENIX II" IS A HEAVY BUILT, DIESEL POWERED COMMERCIAL TROLLER WITH VERTICAL BOW, SOFT CHINE AND ROUNDED STERN FITTED WITH A WOODEN CABIN FORWARD AND ATTACHED FLY BRIDGE.

BELOW DECK BEGINNING AT THE BOW AND WORKING AFT IS A BOW STORAGE LOCKER FOLLOWED AFT BY FOC'SLE BERTHING FOR 2-PERSONS THENSE A STORAGE AREA THENSE MACHINERY SPACE. MACHINERY SPACE CONTAINS MAIN PROPULSION AND AUXILIARY ENGINES, DC BATTERY SYSTEM, PUMPS AND PORT AND STARBOARD FUEL OIL TANKS (560 GALLONS EA.). NEXT AFT IS VESSEL'S CARGO HOLD WITH A REPORTED CAPACITY OF 4.5-TONS OF ICED TUNA THENSE LAZERETTE FITTED WITH STEERING GEAR AND PORT AND STARBOARD FRESH WATER TANKS (200 GALLONS EA.) THENSE A TROLLING COCKPIT THEN STERN.

ABOVE DECK ON RAISED FOREDECK IS A FOC'SLE ESCAPE HATCH FOLLOWED AFT BY ANCHOR WINCH THEN MAIN WOODEN CABIN. CABIN CONTAINS HELM ON CENTERLINE WITH ENGINE ROOM ACCESS, GALLEY AREA AND ACCESS TO AFT DECK BY WAY OF A RAISED WEATHERTIGHT WOOD DUTCH DOOR TO STARBOARD. PORTSIDE CABIN IS FITTED WITH BERTHING FOR 2-PERSONS FOLLOWED BY VESSEL'S DINETTE. AFT OF MAIN CABIN IS A RAISED FISH HOLD COMBING MEASURING 30" HIGH BY 63" WIDE BY 54" LONG FITTED WITH AN ALUMINUM COVER WITH BUILT-IN ACCESS HATCH. MOVING AFT IS A 4" HIGH POOP DECK FITTED WITH AN 18" X 24" WATERTIGHT DECK HATCH FOR LAZERETTE ACCESS THENSE A RAISED TROLLING COCKPIT COMBING WITH WOODEN COVER THEN STERN. AFT DECK IS SURRONDED BY 25" HIGH ALUMINUM BULWARKS FITTED WITH A 36" HIGH OFF DECK 2" ALUMINUM LASHING RAIL.

FLY BRIDGE CONTAINS A SECOND HELM STATION SIGHTED ON CENTERLINE ALONG

WITH ENGINE EXHAUST COWLING.

**GALLEY APPLIANCES**

- DICKINSON PACIFIC OIL RANGE WITH HIGH HEAT PROTECTION
- EMERSON MICROWAVE OVEN
- SMALL AC POWERED REFRIGERATOR/FREEZER
- DOUBLE STAINLESS-STEEL SINK
- SANYO TV

**MASTS AND RIGGING**

- 6" TAPERED ALUMINUM MAST ESTIMATED 30 FT. IN HEIGHT STEPPED ON MAIN DECK AND SUPPORTED BY 9/16" WIRE ROPE FORWARD, AFT AND SIDE STAYS. MAST IS FITTED WITH 1 EA 1000-WATT HPS CRABLIGHT FACING FORWARD.
- 1 PAIR OF 3" ALUMUNUM TROLLING POLES ESTIMATED AT 30 FT. IN LENGTH FITTED WITH STABILIZERS
- 3" ALUMINUM BOOM ESTIMATED AT 20 FT. IN LENGTH

**ELECTRONIC AND NAVIGATION EQUIPMENT**

- 4" RITCHE STEERING COMPASS ON FLY BRIDGE
- ICOM 2300H 2-METER RADIO
- 2 EA ICOM IC-M324 DSC VHF RADIOS
- FURUNO 1750 RADAR
- FURUNO NAV-NET SOUNDER/ CHARTPLOTTER/RADAR
- 1 EA FURUNO GP-31 & GP-36 GPS RECIEVERS
- STANDARD HORZION ECLIPSE VHF RADIO
- KODEN KCG 222 GPS COMPASS
- COMNAV 1001 AUTOPILOT WITH RUDDER ANGLE INDICATOR AND COMNAV 202 LEVER STEER
- DIRIGO 6" STEERING COMPASS WITH DEVIATION CARD
- 2-STATION HYDRAULIC STEERING

- ELECTRIC THROTTLE AND SHIFTING CONTROLS
- FURUNO LS-6000 SOUNDER
- BAROMETER
- MAIN ENGINE PYROMETER
- PILOTHOUSE POWER BACK-UP SYSTEM CONSISTING OF 1 EA GROUP 24 12-VOLT AUTOMOTIVE BATTERY IN POLY BOX WITH COVER

ENGINES 8V-71

BUILT BY DETROIT DIESEL

CYLINDERS VEE-8

INSTALLED MOH 2006

(5,925 HOURS SINCE MAJOR OVERHAUL, REPORTED TO RUN WELL)

KIND 2-CYCLE DIESEL, KEEL COOLED

HORSEPOWER 300 @ 1,800 RPM

LOCATED FORWARD

ENGINE FOUNDATION HEAVY TIMBERS

EXHAUST CLEAR OF WOODWORK YES

FUEL USED PER HOUR 4 AVERAGE

GEAR TWIN DISC MG-509, 2.58 TO 1 REDUCTION RATIO

SHUT OFF VALVES AT THROUGH HULLS AND FUEL OIL TANKS

PIPING BRONZE THROUGH HULL AND VALVES TO HOSE

FUEL LINES TO ENGINE COPPER TO USCG APPROVED NEOPRENE HOSE

TANKS

- 2 EA FUEL OIL
- HYDRAULIC OIL - 35 GALLONS
- SEWAGE WASTE - 50 GALLON POLY

MATERIAL:FUEL OIL TANKS ALUMINUM (NEW 2006) CAPACITY 1,120-GALLONS TOTAL

VENTED TO ATMOSPHERE

FILLING LINES DECK PLATES

PUMPS

- 2 EA RULE 3200 12-VOLT SUBMERSIBLES FOR BILGES
- PACER 2" HYDRAULIC POWERED CRAB CIRCULATION
- FLOJET 12-VOLT PRESSURE DEMAND FOR DECK WASHDOWN

- 12-VOLT OIL CHANGE PUMP
- FLOJET 12-VOLT PRESSURE DEMAND FOR FRESH WATER
- 120-VAC PORTABLE SUBMERSIBLE FOR EMERGENCY
- TYEE #2 DECK MOUNTED DIAPHRAM FOR BILGES

ARE THERE TWO SEPERATE MEANS OF PUMPING BILGES ? YES

ARE BILGE DISCHARGE LINES CHECK VALVE PROTECTED ? YES

WATER TANKS 2 EA 200-GALLON LOCATED PORT AND STARBOARD STERN POLY

ELECTRICAL SYSTEM

- 32-VOLT MAIN ENGINE STARTING
- 1 BANK OF 32-VDC CONSISTING OF 4 EA 8-VOLT MARINE BATTERIES PROTECTED BY A COLE HERSHEE VAPOR PROOF DISCONNECT SWITCH
- 3 BANKS OF 12-VDC CONSISTING OF 1 EA 8-D MARINE BATTERY PROTECTED BY A COLE HERSHEE VAPOR PROOF DISCONNECT SWITCH.  
(NOTE: ALL BATTERIES WWELL SECURED IN WOODEN BOX WITH COVER)
- 120-VAC SINGLE PHASE POWER SYSTEM
- 120-VAC 30-AMP SHORE POWER SERVICE
- RARITAN 12-VOLT R40112B CONSTAVOLT
- OUTBACK POWER SYSTEMS CONSTAVOLT/3500-WATT INVERTER
- NOTE: OWNER REPORTS ALL NEW VESSEL WIRING IN 2006

SWITCHBOARD LOCATION DC PILOTHOUSE

WIRING MARINE GRADE

DO PROPELLERS EXTEND BELOW KEEL NO

SKEG OR SHOE SHOE

SERVICE WEST COAST SALMON, TUNA & CRAB

SPEED IN KNOTS 9 AVERAGE

HAS VESSEL BEEN CARED FOR BY OWNER YES

NO. OF CREW CAPTAIN & 1-2

EXPERIENCE OF OWNER OR MASTER 20 YEARS

SAFETY EQUIPMENT

- LIFERAFT NOT ONBOARD, BEING SERVICED (SEE RECOMMENDATIONS)
- ACR CAT. I 406 MHZ. EPIRB
- BELL
- 24" LIFERING WITH LINE

- FOC'SLE ESCAPE HATCH
- 4 EA ADULT SURVIVAL SUITS
- 4 EA ADULT TYPE 1 PFDS
- 1 EA ADULT TYPE V PFD
- FLARE KIT
- FIRST AID KIT
- DAMAGE CONTROL KIT
- HORN
- GENERAL ALARM SYSTEM
- ENGINE OIL DRIP PAN

**USCG DOCKSIDE SAFETY EXAM # 296450, EXPIRES 10/2024**

**STABILITY REPORT N/A**

**ALARMS**

- MAIN ENGINE LOW OIL PRESSURE
- HIGH WATER ENGINE ROOM AND SHAFT ALLEY BILGES
- ENGINE ROOM AND GALLEY FIRE

**FIRE EXTINGUISHERS**

- 1 EA TYPE BC SIZE I & 1 EA TYPE BC SIZE II IN CABIN
- 1 EA TYPE BC SIZE I IN PILOTHOUSE
- 2 EA TYPE BC SIZE II IN ENGINE ROOM

**PLACKARDS POSTED**

- DISCHARGE OF OIL
- ILLEGAL DRUGS
- REPORT ALL INJURIES
- EMERGENCY RADIO PROCEDURES

AUXILIARY ENGINES

- ONAN 3-CYLINDER DIESEL, KEEL COOLED DRIVING A 8-KW 120/240 SINGLE PHASE GENERATOR, ENGINE OUT-OF-SERVICE, NON-OPERATIONAL AND SCHEDULED FOR REPLACEMENT.

PROPELLERS 42"D X 29"P RH 3-BLADE BRONZE

TAILSHAFT 2-1/2" STAINLESS SHAFTS LAST DRAWN 2020

PACKING GLAND BRONZE COMPRESSION

RUDDER 36" X 49" SINGLE STEEL SPADE

GROUND TACKLE

- HYDRAULIC POWERED ANCHOR WINCH
- 250 LB. NAVY ANCHOR
- EST. 20 FT. OF 3/4" AND 65 FT. OF 1/2" CHASIN
- EST. 300 FT. OF 3/4" WIRE RODE

CONDITION OF HULL

- VESSEL WAS SURVEYED OUT OF THE WATER. HULL WAS PRECUSSION SOUNDED FOR INTERGRITY WITH NO DEFECTS OR DAMAGE NOTED. HULL APPEARED WELL MAINTAINED AND IN WELL ABOVE AVERAGE CONDITION CONSIDERING HER AGE AND SERVICE. OWNER REPORTS EXTENSIVE WORK COMPLETED TO HULL IN 2006 INCLUDING SOME NEW FRAMES AND PLANKING, COMPLETE REFASTENING AND RECAULKING. VESSEL'S HULL APPEARED TIGHT AND DRY WITH NO WEEPING SEAMS. NO FASTENERS WERE REMOVED FOR INSPECTION AT TIME OF SURVEY.

OTHER EQUIPMENT NOTED

- MAIN ENGINE FRONT PTO WITH TWIN DISC SL-111 CLUTCH DRIVING HYDRAULIC PUMP FOR DECK EQUIPMENT
- ALUMINUM CRAB DAVIT WITH JUNES 17" CRAB BLOCK

- ALUMINUM HAYRACK WITH 1 PAIR OF SIMPLEX 3-SPOOL SALMON GURDIES
- STARBOARD SIDE BOARDING GATE
- HONDA 3000I PORTABLE GASOLINE POWERE GENERATOR
- SHAFT BRUSH
- 20-GALLON AC POWERED HOT WATER HEATER
- VISE
- DRILL PRESS
- RACOR FUEL FILTER SYSTEM

REMARKS

- VESSEL WAS SURVEYED WHILE HAULED-OUT FOR MAINTAINANCE INCLUDING NEW BOTTOM COATINGS AND ZINCS. VESSEL WAS FOUND IN GOOD OVERALL CONDITION AND WELL MAINTAINED. OWNER REPORTS EXTENSIVE HULL REPAIRS, NEW ELECTRICAL WIRING, NEW FUEL AND FRESH WATER TANKS, NEW MAST AND RIGGING, NEW LIVING QUARTERS IN 2006 AND LATER.

RECOMMENDATIONS

- FOUND: LIFERAFT WAS NOT ONBOARD AT TIME OF SURVEY (BEING SERVICED)  
RECOMMEND: PLACE LIFERAFT ONBOARD PRIOR TO PLACING VESSEL INTO SERVICE

ATTENDED BY [REDACTED]

-----

THIS SURVEY SETS FORTH THE CONDITION OF THE VESSEL AT THE TIME OF THE SURVEY TO THE BEST OF THE SURVEYOR'S ABILITY AND WITHOUT THE REMOVAL OF BULKHEADS, PANELING, CEILING OR OTHER PORTIONS OF HER STRUCTURE AND WITHOUT THE TESTING OF OR OPENING UP OF PROPULSION MACHINERY OR AUXILIARIES, TANKS OR FITTINGS FOR INTERNAL EXAMINATION OR DRAWING OF SHAFTING, OR DISASSEMBLY OF VALVES. THIS REPORT DOES NOT DEAL WITH COAST GUARD SFETY REQUIREMENTS, NOR WAS A STABILITY TEST DONE. IT IS THE OWNER'S RESPONSIBILITY TO ENSURE THAT THE VESSEL IS EQUIPPED TO MEET SAID REQUIREMENTS. THIS IS NOT A CERTIFICATE OF SEAWORTHINESS. IT REPRESENTS THE HONEST, UNBIASED OPINION OF THE SURVEYOR BASED ON CONDITIONS FOUND AND IS NOT A WARRANTY OF THE CONDITION OF THE VESSEL OR ITS HULL, MACHINERY OR EQUIPMENT.

\*\*\*\*\*





Figure 1 GALLEY AREA



Figure 2 DINETTE



Figure 3 CABIN BERTHING

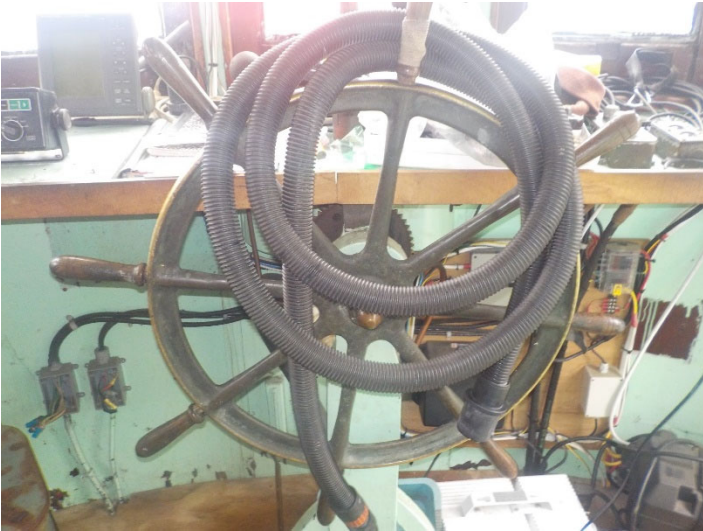


Figure 4 HELM



Figure 5 ELECTRONICS



Figure 6 ELECTRONICS



Figure 7 FISH HOLD



Figure 8 FISH HOLD



Figure 9 FISH HOLD



Figure 10 PACKING GLAND

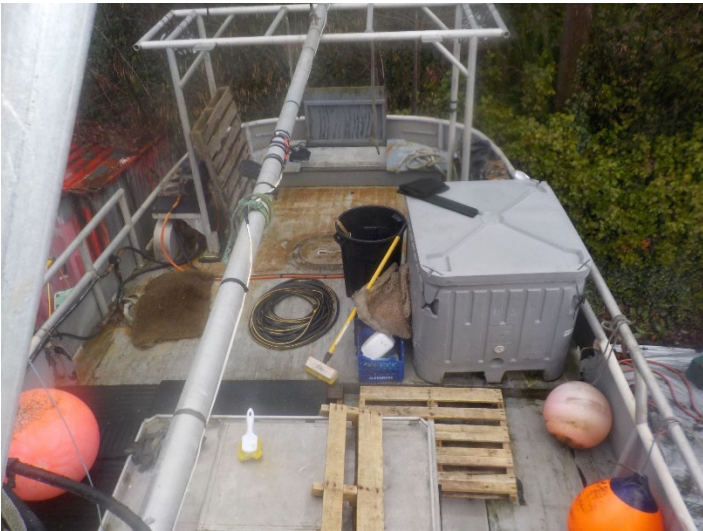


Figure 11 AFT DECK



Figure 12 FOREDECK



Figure 13 FLY BRIDGE



Figure 14 MAST AND LIGHTING



Figure 15 TROLLING COCKPIT



Figure 16 LAZERETTE



Figure 17 STEERING



Figure 18 CRAB DAVIT AND CRAB BLOCK



Figure 19 AFT DECK



Figure 20 AFT DECK



Figure 21 FLY BRIDGE



Figure 22 ANCHOR WINCH



Figure 23 ANCHOR AND BOW ROLLER



Figure 24 STARBOARD BOW





Figure 25 STARBOARD STERN QUARTER



Figure 26 PROPELLER AND RUDDER



Figure 27 PORTSIDE STERN QUARTER



Figure 28 PORTSIDE VIEW



Figure 29 PORTSIDE BOW



Figure 30 FOC'SLE BERTHING



Figure 31 FUEL OIL TANK

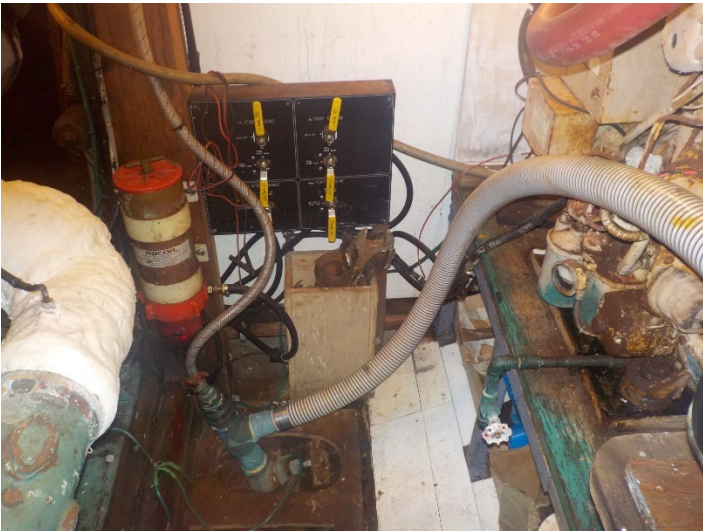


Figure 32 ENGINE ROOM



Figure 33 AUXILIARY ENGINE (NON-OPERATIONAL)



Figure 34 MAIN ENGINE



Figure 35 DC BATTERIES



Figure 36 ENGINE ROOM



Figure 37 SEWAGE HOLDING TANK